

CIJ Southern Construction Summit
Role of Construction Sector in Future Development of Irish
Economy
September 7th 2023

Economist, Writer & Podcaster
cjpeconomics.substack.com



Jim Power
economics

The Global Status

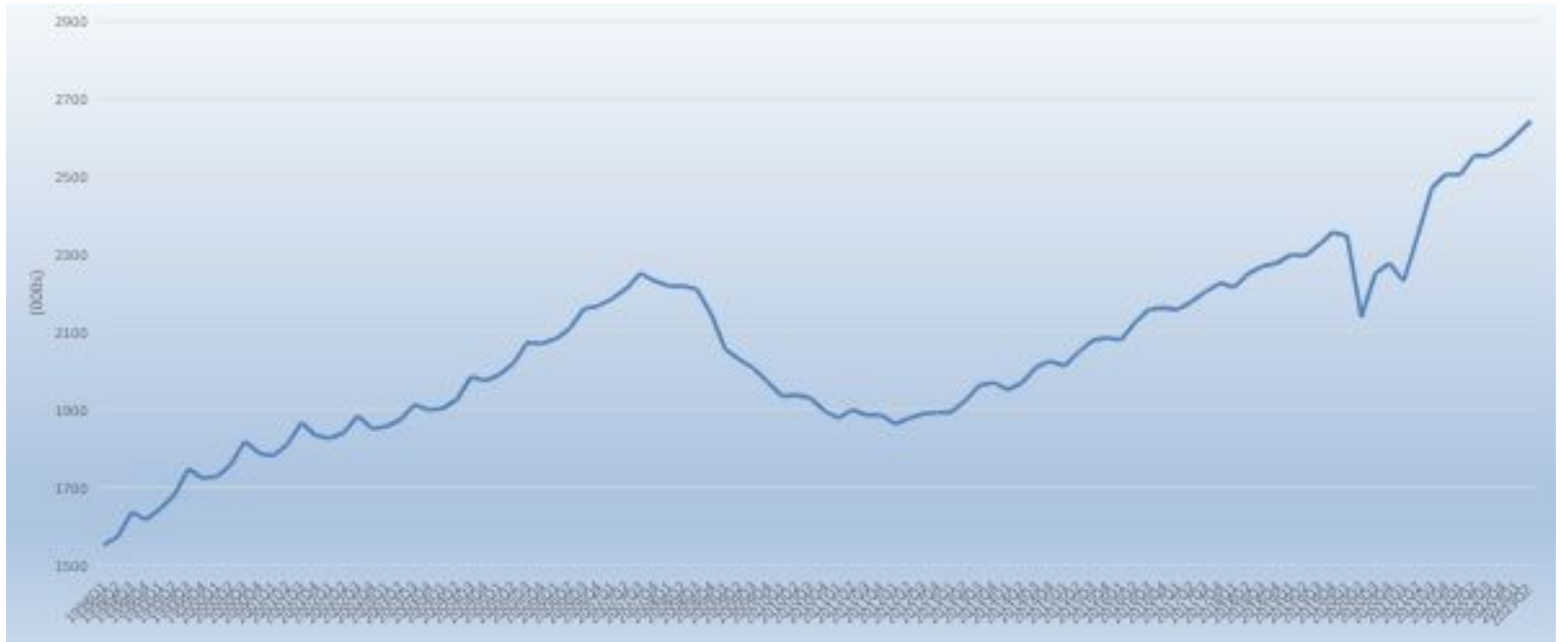
- Economic growth under pressure everywhere– Germany in technical recession
- Elevated Inflation
- Substantial monetary tightening
- Tight labour markets
- Growing political polarisation/extremist politics & authoritarianism
- Globalisation under pressure eg: investment in China?
- Ukraine War
- Climate Change

The Domestic Status



- Economy very resilient
- Tax revenues very strong
- Employment 2.643 million Q2 2023
- Unemployment Rate 4.4%
- Consumer confidence better, but slipped in August
- Consumer spending slowing, but OK
- Household savings €152 bln (June 2023)
- Housing the big challenge

EMPLOYMENT



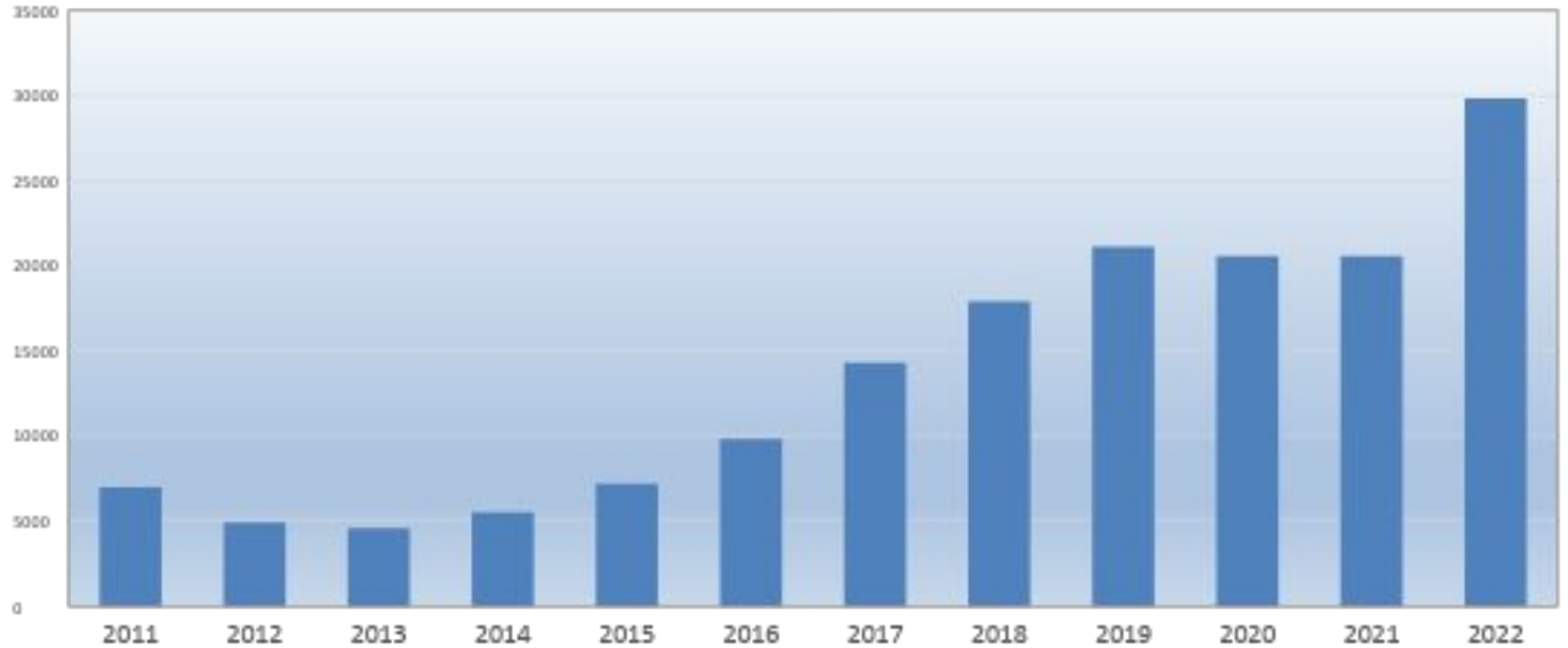
Irish Issues

- Economic Concentration Risk
- Global Technology Issues > Employment & Corporation Tax
- Global Corporation Tax Agenda
- **Housing – key component of national competitiveness**
- **Climate Agenda**
- **Demographics**
- Politics – plan for possibility of extensive change

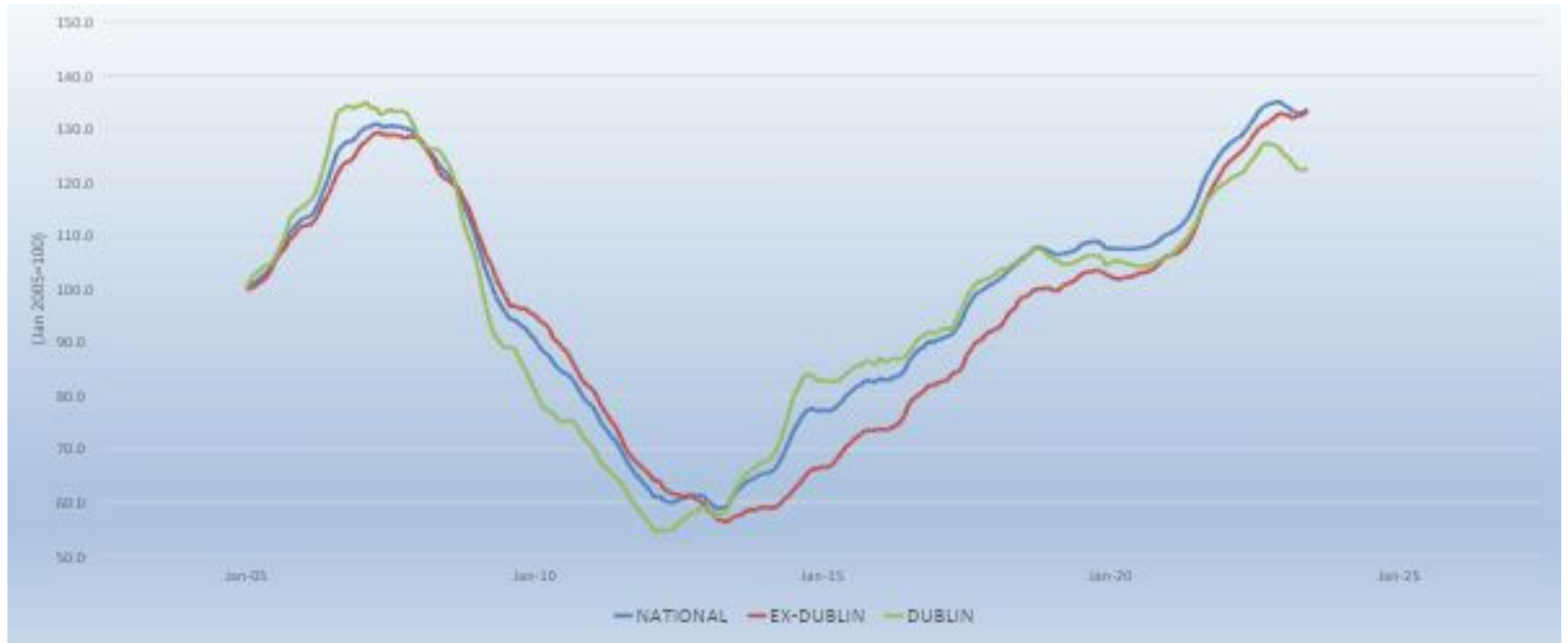
Population



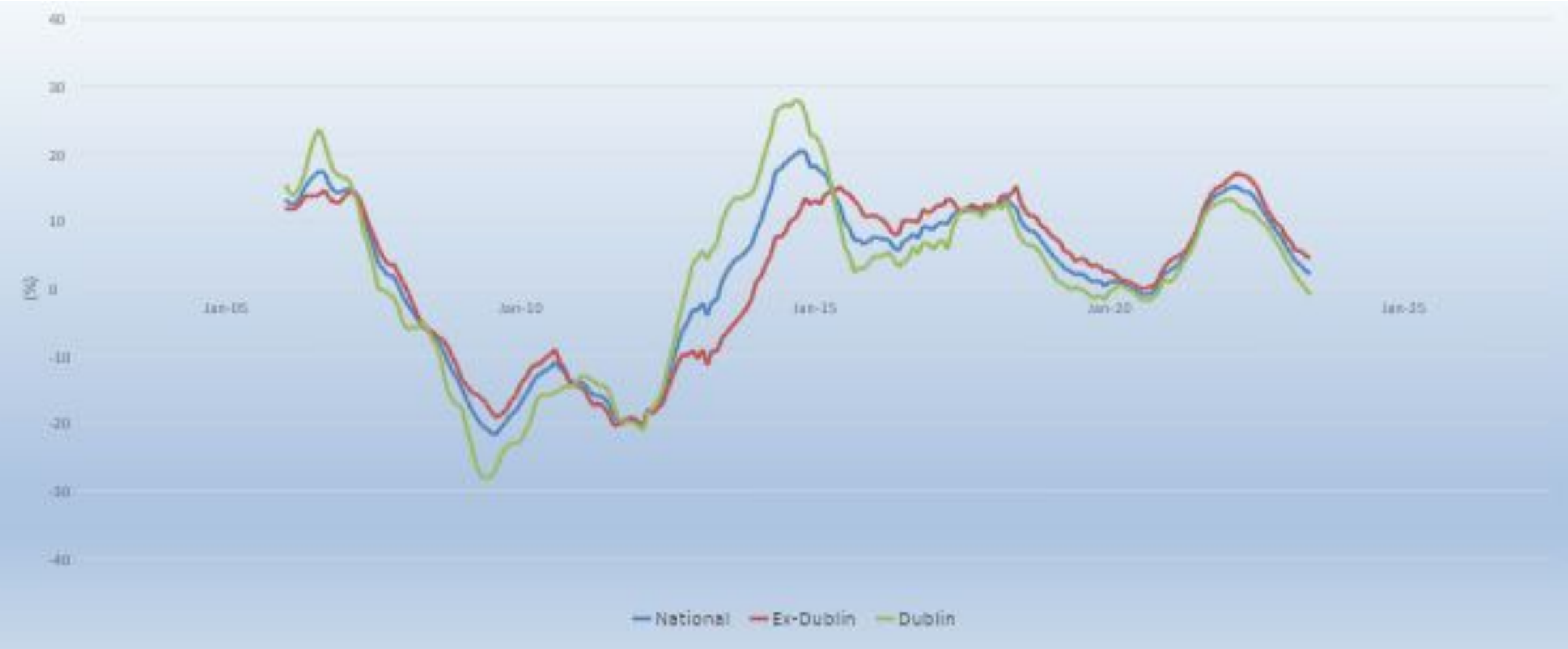
Residential Unit Completions (Average 13,614)



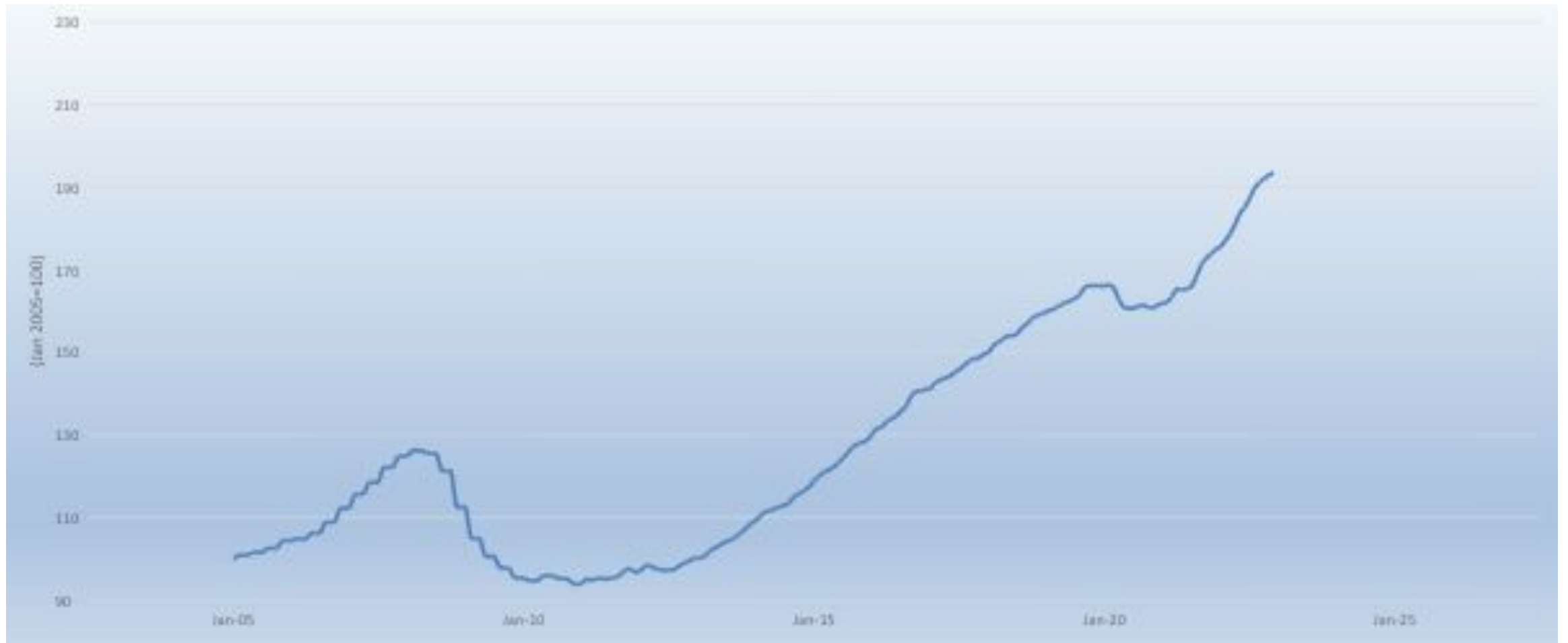
Residential Property Price Index



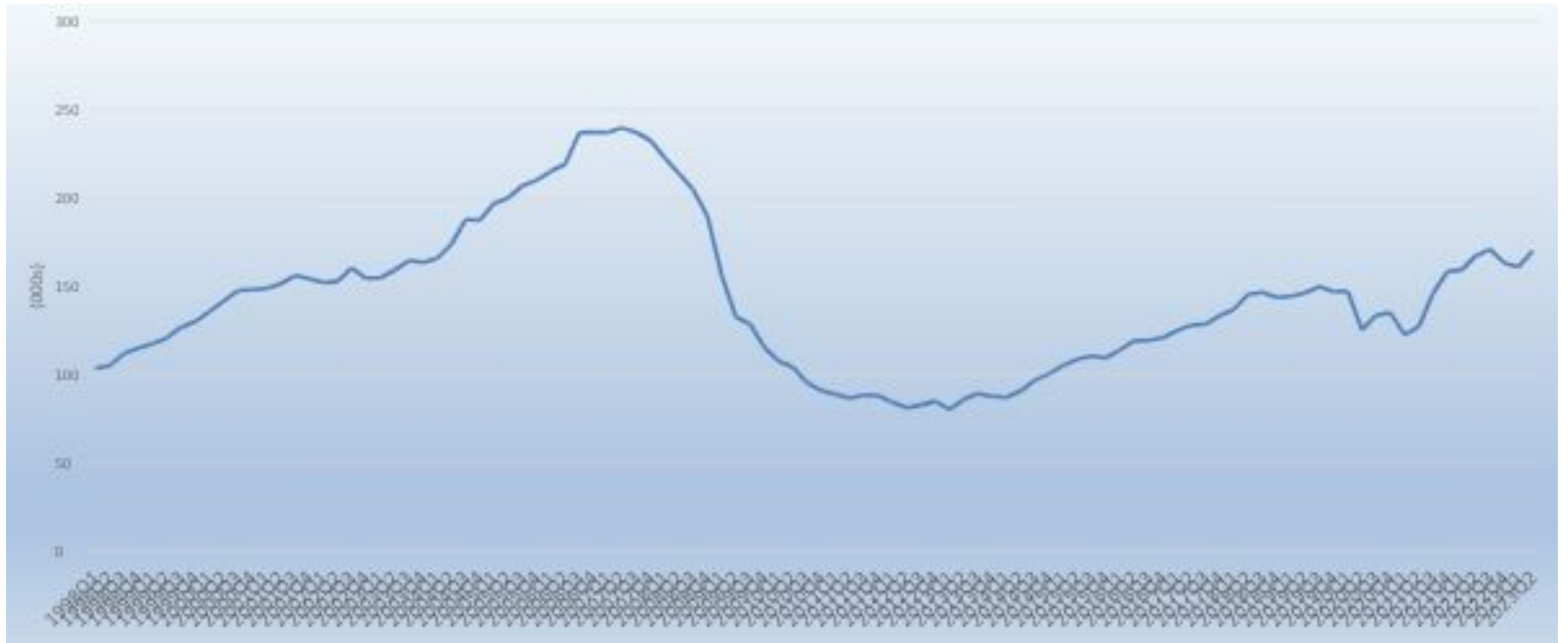
Residential Property Prices (% Annual Change)



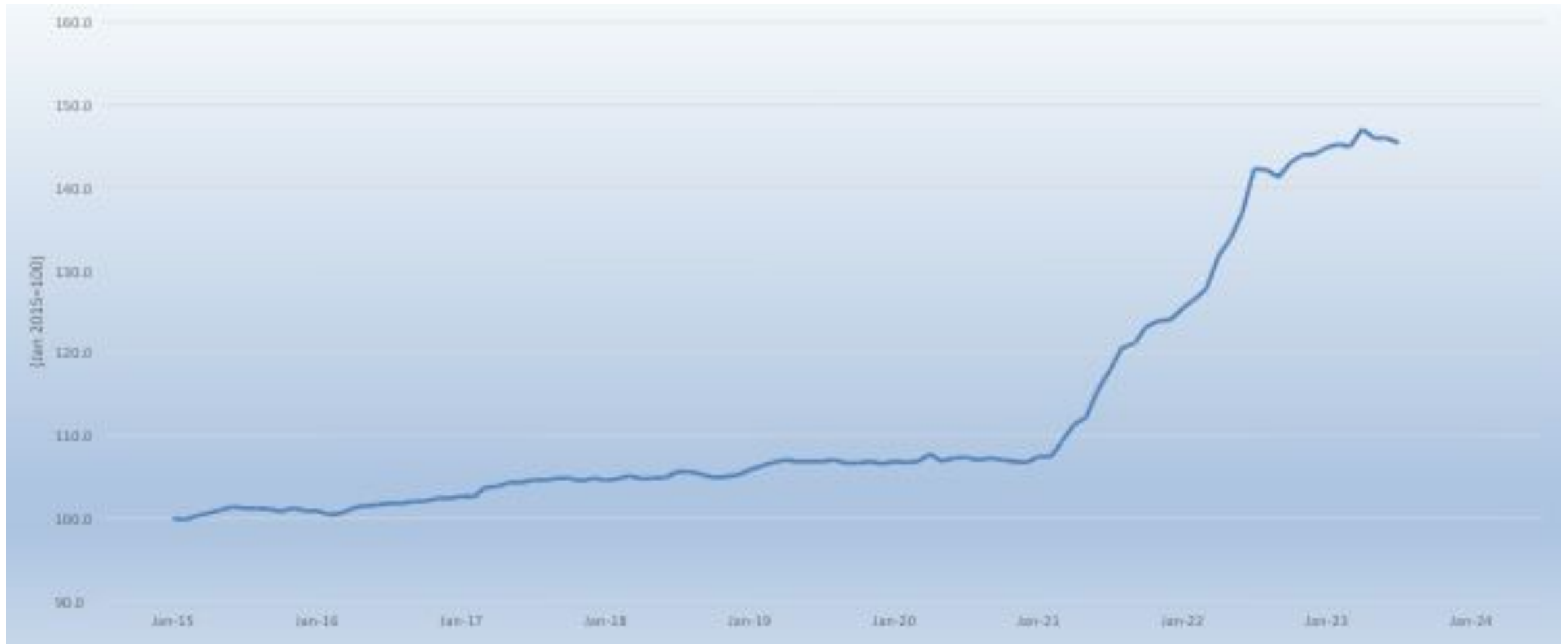
Private Rents



Construction Employment



Wholesale Prices Building & Construction Materials (Ex VAT)



Role Construction Sector Will Have to Play

- Residential accommodation – all three types
- Commercial
- Infrastructure
- Climate Change Agenda
- Official policy needs to recognise market realities and take brave political decisions
- Better chance of Waterford winning an All-Ireland !!!!

PODCAST COMMERCIAL

Podcast Launched February 2021 Chris
Johns & Jim Power

'The Other Hand'

Please check it out & subscribe on Apple
Podcasts or Spotify if you like it.

<https://cjpeconomics.substack.com/> for
ongoing written economic commentary